

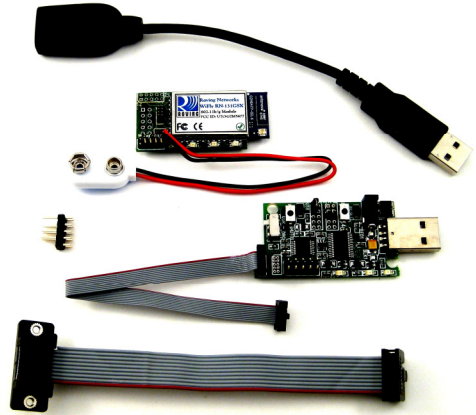
WiFly GSX evaluation Kit

Overview

This document describes the hardware and software setup for the Roving Networks WiFly GSX 802.11 b/g module. In addition to the RN-131G-EVAL kit you will need a Windows based computer with a USB port. You may also need a null modem serial cable or USB to serial cable, if you want to connect the WiFly GSX UART to your computer.

The WiFly GSX module is mounted to a development carrier board called the SURF board. This board has status LEDs and connections for the programmer and UART interfaces.

The evaluation kit allows you to configure and program the WiFly GSX 802.11 b/g module using the command interface, create connections and transfer data. The command interface is made up of simple ASCII commands. A complete listing is available in the WiFly GSX User Manual (rn-131-um.pdf).



Evaluation Kit Description

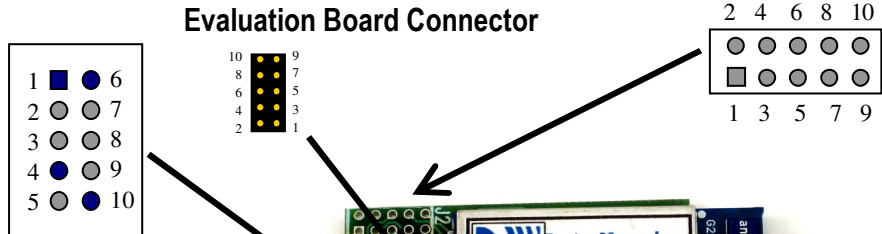
The evaluation kit includes the following hardware required to connect to the WiFly GSX module through the USB of your computer.

- SURF board with WiFly GSX module
- Evaluation board – links your computer to the SURF board
- 10pin (2x5) 050" board to board cable – connects the SURF board to the evaluation board
- USB cable – connects the SURF board to the host computer
- Serial cable – connects the SURF board to a RS232 device
- Header – for RS232 connections using the serial cable

In addition to the hardware in the WiFly GSX evaluation Kit you will need a x86 compatible computer with a USB port running Windows XP or Vista. The WiFly GSX evaluation kit may work with other Windows versions and operating systems. However this document only covers the Windows XP and Vista operation.

Before starting install the evaluation board drivers for the USB interface. These can be found on the Roving Networks website at: <http://www.rovingnetworks.com/bin/RN-USB-X-WINDOWS.exe>

Surf Board Description



Evaluation Board Connector

UART Interface

WARNING: Both RS232 and TTL signal levels are on this interface

RX into the SuRF board
TX is from the SuRF board

PIN	Description	Signal Level
1	TXDB	TTL
2	TX	RS232
3	RX	RS232
4	RTSB	TTL
5	GND	-
6	CTSB	TTL
7	RTS	RS232
8	CTS	RS232
9	VDC	9V DC
10	RXDB	TTL

Other Signals

WARNING: TTL signal levels

PIN	Description
1	Sensor PWR
2	PIO7
3	Sensor-4
4	PIO8
5	Sensor-5
6	SPI_MISO
7	Sensor-6
8	SPI_CLK
9	Sensor-7
10	SPI MOSI

Jumper Block

Jumper	Description
1	Do not use, removed
2	Adhoc mode
3	Config 1
4	Config 2
5	Config 3

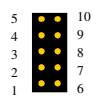
LED Indicators

Condition	Blue LED	Red LED	Yellow LED	Green LED
ON solid	Power On	Not Associated		Connected over TCP
Fast blink			Rx/Tx data transfer	No IP address
Slow blink		Associated, No Internet		IP address OK
OFF	No Power	Associated, Internet OK		

Evaluation Board Description

RS232 Serial Port Interface
Use 10 pin to female DB9 cable
Not used for RN-131-EVAL

Evaluation Board Connector
Use 10 pin 0.5 pitch to cable



Module reset

Module wakeup

Jumper set for USB Operation

Programming Switch
Debug mode User Mode

NOTE: The evaluation board should have the jumper set for USB operation and the programming switch set to User Mode

There are three ways to setup and configure the WiFly GSX module

1. Using the Evaluation board with a terminal emulation program
2. Over the air using Adhoc networking mode with Telnet
3. Through the UART interface (Embedded applications)

NOTE: We suggest using TeraTerm as you terminal emulator program. This is available for download from the Roving Networks website. <http://www.rovingnetworks.com/support/teraterm.zip>

Do not use HyperTerm with the Evaluation Board it has several bugs that make it unusable for this application.

Configuration using the Evaluation Board

The evaluation board physically connects your computer to the WiFly GSX module. With the drivers installed the programmer will appear as a "USB Serial Port" on a COM port. The Evaluation board will have the green LED on when plugged into the USB.

This is a two step process:

1. Making a connection to the WiFly GSX module
2. Configuring the WiFly GSX module to access the WiFi network

Once complete the WiFly GSX module is associated with the network and has acquired an IP address.

Step 1: Setting up the hardware

USB Connection:

1. Connect the USB extension cable to the development board.
2. Connect the 10pin ribbon cable to the evaluation board. When looking from above, red side of the ribbon should be towards the center of the module.
3. Connect the other end of the 10pin ribbon cable to the WiFly GSX Module, the red side of the ribbon cable should away from the jumper block.
4. Verify that the jumper is set for USB mode, and the programming switch is in the User mode position.
5. Plug the USB cable into the computer.

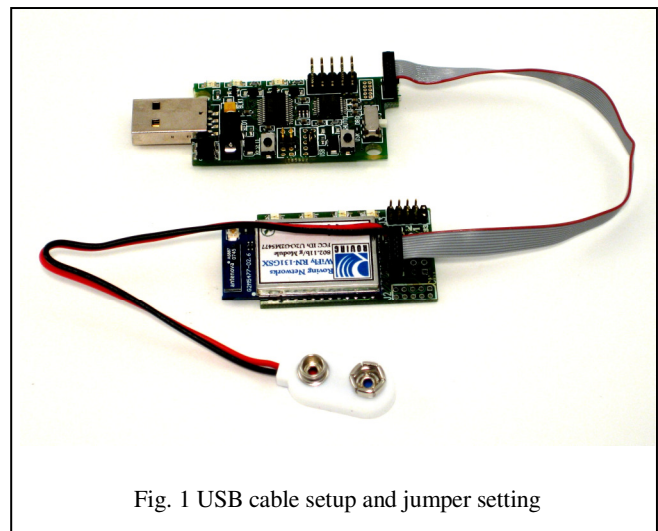


Fig. 1 USB cable setup and jumper setting

Note: When the SuRF board is connected to the Evaluation board the 9 volt battery is not needed.

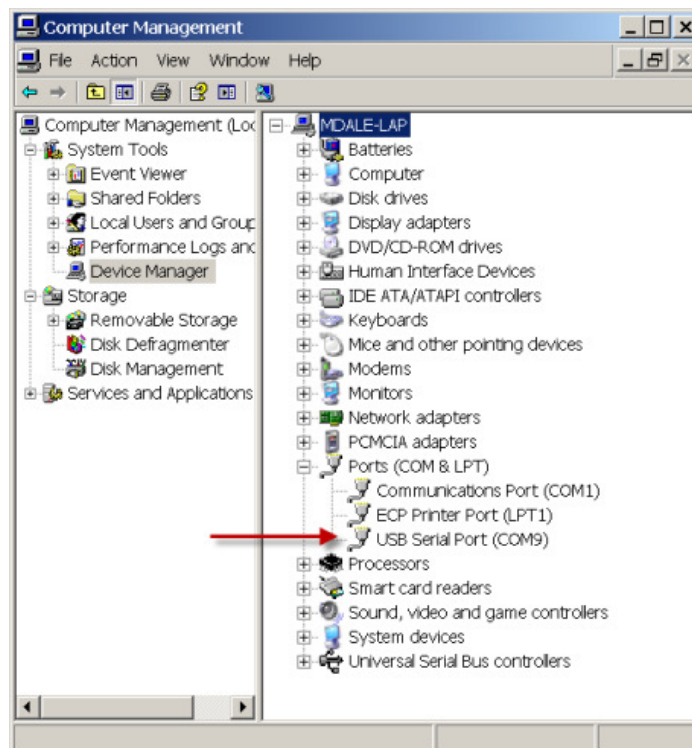
Step 2: Configuring the WiFly GSX Module

Configuration commands are made over the data channel when the module is in command mode. The escape sequence \$\$\$ enters command mode. Once in command mode, the WiFly GSX device is configured using simple ASCII commands. To leave command and return to data mode type *exit*.

The most basic configuration requires only the name (SSID) and channel of the wireless network. The WiFly GSX module can only associate with one network at a time. It is recommended that you first configure the WiFly GSX module using an open access point to simplify the setup.

Using a terminal emulator to communication with the WiFly GSX module.

1. Determine the COM port the USB Serial port is connected on. This can be found by opening the "Device Manager" which is part of the system tools in Windows. In the Device Manager browse and expand the selection for Ports (COM & LPT) In the example to the right the USB serial port is COM9
2. Next open up the terminal emulator using the COM port found in the previous step. If using TeraTerm, select **Serial** and choose the COM **Port** from the pull down list.



Entering Command Mode

1. From within the terminal window, put the WiFly GSX module into command mode by typing **\$\$\$** in the terminal window. You should get **CMD** back confirming you are in command mode.
2. Next type **show net** to display the current network settings.

```

CMD
show net
SSid=TheLoft
Chan=6
Assoc=OK
DHCP=OK
Time=FAIL
Links=1
<2.03> █
  
```

NOTE: After each command completes you will see a prompt that looks like <X.XX> where X.XX indicates the version of firmware running on the module. In the example to the right the version is 2.03

Finding Available Networks

Use the scan feature in the WiFly GSX module to find the name (SSID) and channel of available networks. To start the scan you must have your terminal emulator connected and the WiFly module must be in command mode.

- Type **scan** at the WiFly GSX command prompt for a list of WiFi networks within range

```

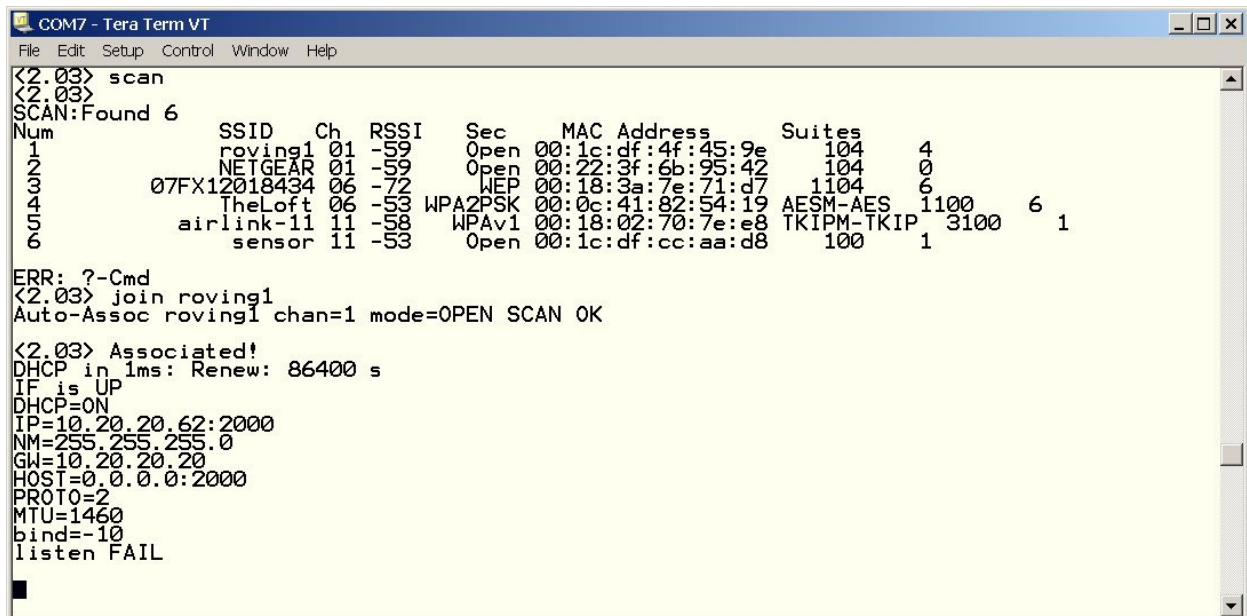
CMD
scan
<2.03>
SCAN:Found 6
Num      SSID      Ch  RSSI   Sec   MAC Address      Suites
1        roving1  01  -64    Open  00:1c:df:4f:45:9e  104    4
2        NETGEAR  01  -58    Open  00:22:3f:6b:95:42  104    0
3        07FX12018434 06  -73    WEP   00:18:3a:7e:71:d7  1104   0
4        TheLoft  06  -51    WPA2PSK 00:0c:41:82:54:19 AESM-AES 1100   0
5        airlink-11 11  -53    WPAv1 00:18:02:70:7e:e8 TKIPM-TKIP 3100   0 ac
6        sensor  11  -52    Open  00:1c:df:cc:aa:d8  100    1
  
```

Associating with an access point

The red LED will be blinking if the WiFly GSX is not connected to an access point.

If the access point you're connecting to is open you can simply use the join command to associate with it. From the scan list above you can see that roving1 is an open network access point.

Type **join roving1** to associate with an access point.



```

COM7 - Tera Term VT
File Edit Setup Control Window Help
<2.03> scan
<2.03>
SCAN:Found 6
Num      SSID      Ch  RSSI   Sec   MAC Address      Suites
1        roving1  01  -59    Open  00:1c:df:4f:45:9e  104    4
2        NETGEAR  01  -59    Open  00:22:3f:6b:95:42  104    0
3        07FX12018434 06  -72    WEP   00:18:3a:7e:71:d7  1104   6
4        TheLoft  06  -53    WPA2PSK 00:0c:41:82:54:19 AESM-AES 1100   6
5        airlink-11 11  -58    WPAv1 00:18:02:70:7e:e8 TKIPM-TKIP 3100   6 1
6        sensor  11  -53    Open  00:1c:df:cc:aa:d8  100    1

ERR: ?-Cmd
<2.03> join roving1
Auto-Assoc roving1 chan=1 mode=OPEN SCAN OK

<2.03> Associated!
DHCP in 1ms: Renew: 86400 s
IF is UP
DHCP=ON
IP=10.20.20.62:2000
NM=255.255.255.0
GW=10.20.20.20
HOST=0.0.0.0:2000
PROTO=2
MTU=1460
bind=-10
listen FAIL
  
```

Upon rebooting the WiFly GSX module will attempt to associate with the WiFi network and acquire an IP address. The WiFly GSX module is successfully configured if the red LED is off (associated) and the green light is flashing slowly (IP address acquired).

You could also have specified the roving1 access point to connect to from the list by using the command **join # 1**

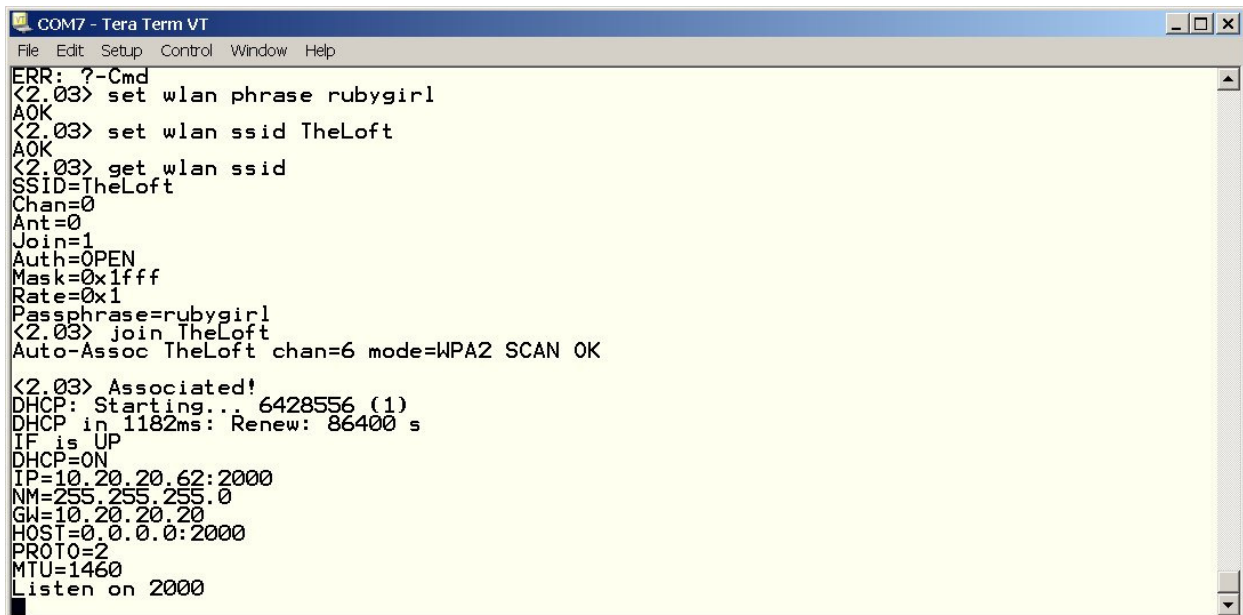
If you know the name of the access point you want to connect to you can set it with out previously using the **scan** command by setting the ssid with the **set wlan ssid access_point_name** and then using the **join** command with no arguments.

Connecting to security enable networks

If the access point you are connecting is running security you will need to provide the security key. The WiFly GSX module will determine the type of security automatically. You enter the security key with the **set wlan phrase key**

You will also want to enter the name of the access point using the **set wlan ssid access_point_name**

Once you have set the security key you can confirm the setting by typing **get wlan ssid**



```
COM7 - Tera Term VT
File Edit Setup Control Window Help
ERR: ?-Cmd
<2.03> set wlan phrase rubygirl
AOK
<2.03> set wlan ssid TheLoft
AOK
<2.03> get wlan ssid
SSID=TheLoft
Chan=0
Ant=0
Join=1
Auth=OPEN
Mask=0x1fff
Rate=0x1
Passphrase=rubygirl
<2.03> join TheLoft
Auto-Assoc TheLoft chan=6 mode=WPA2 SCAN OK

<2.03> Associated!
DHCP: Starting... 6428556 (1)
DHCP in 1182ms: Renew: 86400 s
IF is UP
DHCP=ON
IP=10.20.20.62:2000
NM=255.255.255.0
GW=10.20.20.20
HOST=0.0.0.0:2000
PROTO=2
MTU=1460
Listen on 2000
```

Saving your configuration

Your settings must be saved to the config file or they will not take effect on the next boot cycle. Save the configuration to flash using the **save** command Now reboot the WiFly GSX module by typing **reboot** to see that your changes take effect.

```

COM7 - Tera Term VT
File Edit Setup Control Window Help
ERR: ?-Cmd
<2.03> save
Storing in config
<2.03> reboot
*Reboot*
WiFly Ver 2.03,04-23-2009
MAC Addr=00:12:b8:00:0b:db
Auto-Assoc TheLoft chan=6 mode=WPA2 SCAN OK

*READY*
Associated!
DHCP: Starting... 6478311 (1)
DHCP in 1177ms: Renew: 86400 s
IF is UP
DHCP=ON
IP=10.20.20.62:2000
NM=255.255.255.0
GW=10.20.20.20
HOST=0.0.0.0:2000
PROTO=2
MTU=1460
Listen on 2000
  
```

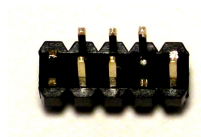
Using the RS232 Interface

Warning the UART Interface contains both RS232 and TTL signal levels

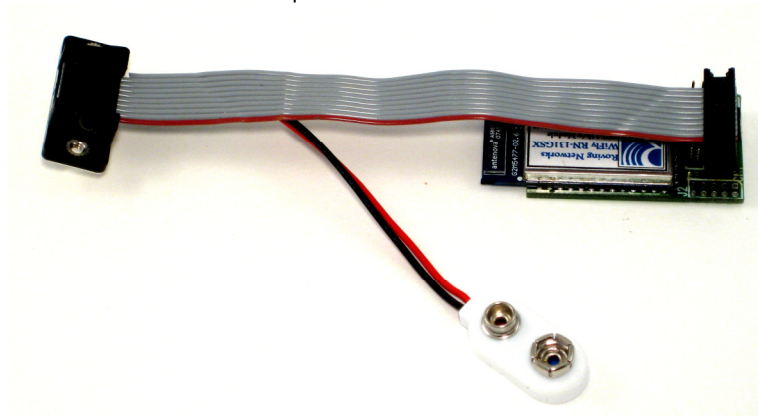
Applying greater than 3.3VDC to pins 1, 4, 6 or 10 can permanently damage the module!

PIN	Description	Signal Level
1	TXD	TTL
2	TX	RS232
3	RX	RS232
4	RTD	TTL
5	GND	-
6	CTSD	TTL
7	RTS	RS232
8	CTS	RS232
9	VDC	5 to 9V DC
10	RXD	TTL

Solder in the partially populated header (pictured below) to connect the 10 pin connector ribbon cable to the module

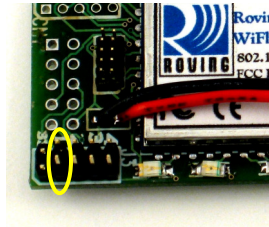


With the header installed the pin 10 to DB9 ribbon cable is installed as such



Using Adhoc mode

The Surf Board is put into Adhoc mode by putting on jumper 2. Jumper 2 is actually the first available jumper since jumper 1 pins have been clipped to avoid accidental shorting to VDC.



With the Surf Board in adhoc mode connect the 9 volt battery. The SuRF board will flash the red, yellow and green LEDs in sequence when the module is in adhoc mode.

The WiFly module creates the following adhoc network with

SSID:	WiFly-GSX
IP address:	169.254.1.1

Connect to the WiFly-GSX network by go into the “Control Panel / Networking and Sharing / Networking and Sharing Center” dialog in Vista or “Control Panel / Network Connections” dialog in Windows XP. From here, view available networks and select the WiFly-GSX network. Once successfully associated the red LED will blink fast and the yellow LED will go off. The green LED remains blinking to indicate there is an IP address but no active connection.

Note: Vista may take one or two minutes allocating IP address for your computer (Auto IP). To work around this you can assign a static IP address.

Once you have associated with the WiFly-GSX network you will be able to ping the WiFly module at the IP address 169.254.1.1 or open a telnet window using port 2000. From telnet you can send data to the WiFly UART or enter command mode to configure the module. For example, it is useful to use adhoc mode to set and save the SSID and security key for enterprise networking without using the development board or UART connection.

Note: The module can not be in Adhoc and Enterprise network mode simultaneously.

Trouble Shooting

WiFly GSX module red LED remains on after setting SSID and channel

The WiFly GSX module can not connect to the networks. Possible problems include, not saving the configuration before rebooting, enter command mode and verify settings. Incorrect or missing WEP/WPA keys, confirm access point is either open (no security) or you have the right authentication level set and the correct pass phrase or key.

WiFly GSX Module red LED is off, but green LED is flash quickly

The WiFly module is associated with the network but was unable to get an IP address. Check the DHCP is ON in WiFly GSX configuration. If using a static IP address make sure the sub-net mask and the gateway IP addresses are set correctly using the **get ip** command

Copyright © 2009 Roving Networks. All rights reserved.

The Bluetooth trademark and logo are registered trademarks of Bluetooth SIG, Inc. All other trademarks are property of their respective owners.

Roving Networks reserves the right to make corrections, modifications, and other changes to its products, documentation and services at any time. Customers should obtain the latest relevant information before placing orders and should verify that such information is current and complete.

Roving Networks assumes no liability for applications assistance or customer's product design. Customers are responsible for their products and applications which use Roving Networks components. To minimize customer product risks, customers should provide adequate design and operating safeguards.

Roving Networks products are not authorized for use in safety-critical applications (such as life support) where a failure of the Roving Networks product would reasonably be expected to cause severe personal injury or death, unless officers of the parties have executed an agreement specifically governing such use.