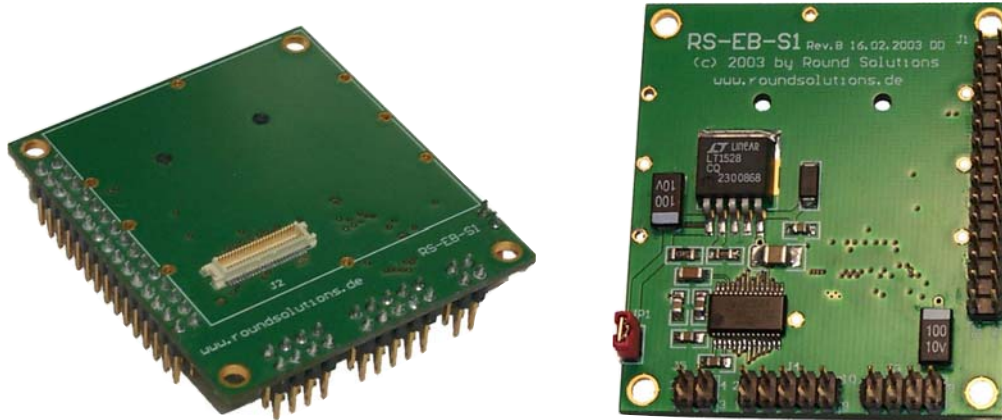


# RS-EB-S1



## RS-EB-S1 Technical Datasheet

Rev. D

**On-Board RS232 Interface Driver**

**Connector for the extra GPIO's**

**On-Board Power Supply Voltage:**

4.2 V - 15 V DC

**Power Consumption:**

TBD

**Operating Temperature:**

-40 °C - +85 °C

**Dimensions:**

57 mm x 50 mm

**Weight:**

TBD

## RS-EB-S1 Technical Datasheet

### Connector Pin outs

#### J1 30-pin Header

Pin#	Name	Pin Type	Pin#	Name	Pin Type
1	EAR_HF+	Analog Output	16	STAT_LED	Output
2	EAR_MT-	Analog Output	17	GND	Power
3	EAR_HF-	Analog Output	18	C103/TXD	Input
4	EAR_MT+	Analog Output	19	C106/CTS	Output
5	GND	Power	20	C125/RING	Output
6	MIC_HF-	Analog Input	21	C107/DSR	Output
7	MIC_MT+	Analog Input	22	C109/DCD	Output
8	MIC_HF+	Analog Input	23	C104/RXD	Output
9	MIC_MT-	Analog Input	24	C108/DTR	Input
10	ON/OFF	Input	25	C105/RTS	Input
11	PWRCTL	Output	26	GND	Power
12	RESET	Input / Output	27	GND	Power
13	GPIO2	Output	28	VBATT	Power
14	AXE	Input	29	GND	Power
15	GPIO1	Input	30	VBATT	Power

For detailed information use the Telit GM862 Product Description !

#### J3 8-pin Header GPIO's

Pin#	Name	Pin Type	Pin#	Name	Pin Type
1	GPIO1	Input	5	GPIO5	Input / Output
2	GPIO2	Output	6	GPIO6 / ALARM	Input / Output
3	GPIO3	Input / Output	7	GPIO7 / BUZZER	Input / Output
4	GPIO4	Input / Output	8	GND	Power

## RS-EB-S1 Technical Datasheet

### Connector Pin outs

<b>J2 Molex Connector</b>					
<b>Pin#</b>	<b>Name</b>	<b>Pin Type</b>	<b>Pin#</b>	<b>Name</b>	<b>Pin Type</b>
1	VBATT	Power	26	SIMCLK	Output
2	Ground	Power	27	CCIN	Input / Output
3	VBATT	Power	28	GPIO2	Output
4	GND	Power	29	C106/CTS	Output
5	VBATT	Power	30	C125/RING	Output
6	GND	Power	31	GPIO1	Input
7	VBATT	Power	32	CLKSXM	For test purpose
8	GND	Power	33	C107/DSR	Output
9	EAR_HF+	Analog Output	34	TXDD	For test purpose
10	EAR_MT-	Analog Output	35	EMMI TX	Output
11	EAR_HF-	Analog Output	36	C109/DCD	Output
12	EAR_MT+	Analog Output	37	C104/RXD	Output
13	MIC_HF-	Analog Input	38	SCLK	For test purpose
14	MIC_MT+	Analog Input	39	STAT_LED	Output
15	MIC_HF+	Analog Input	40	RXDD	For test purpose
16	MIC_MT-	Analog Input	41	EMMI RX	
17	ON/OFF	Input	42	RFSD	For test purpose
18	AXE	Input	43	C108/DTR	Input
19	SIMIO	Input / Output	44	TFSD	For test purpose
20	C103/TXD	Input	45	C105/RTS	Input
21	PWRCTL	Output	46	GPIO3	Input / Output
22	SIMVCC	-	47	GPIO4	Input / Output
23	RESET	Input	48	GPIO5	Input / Output
24	SIMRST	Output	49	GPIO6 / ALARM	Input / Output
25	TEST32kHz	For test purpose	50	GPIO7 / BUZZER	Input / Output

For detailed information see also the Telit GM862-GPRS/-GSM/-SMS  
Product Description !

## RS-EB-S1 Technical Datasheet

### Connector Pin outs

#### J4 10-pin RS232 Interface Connector

Pin#	Name	Pin#	Name
1	DCD	6	CTS
2	DSR	7	DTR
3	TXD	8	Ring
4	RTS	9	GROUND
5	RXD	10	NC

#### SubD-9-pin-female RS232 Standard Interface Connector

Pin#	Name	Pin#	Name
1	DCD	6	DSR
2	TXD	7	RTS
3	RXD	8	CTS
4	DTR	9	Ring
5	GROUND		

You can connect a flat ribbon cable with a Sub-D-Crimp Connector directly to J4. See also Schematic "SubD-Connection" on page# 8!

#### J5 4-pin External Power Connector

Pin#	Name	Pin#	Name
1	External Power	3	GND
2	External Power	4	GND

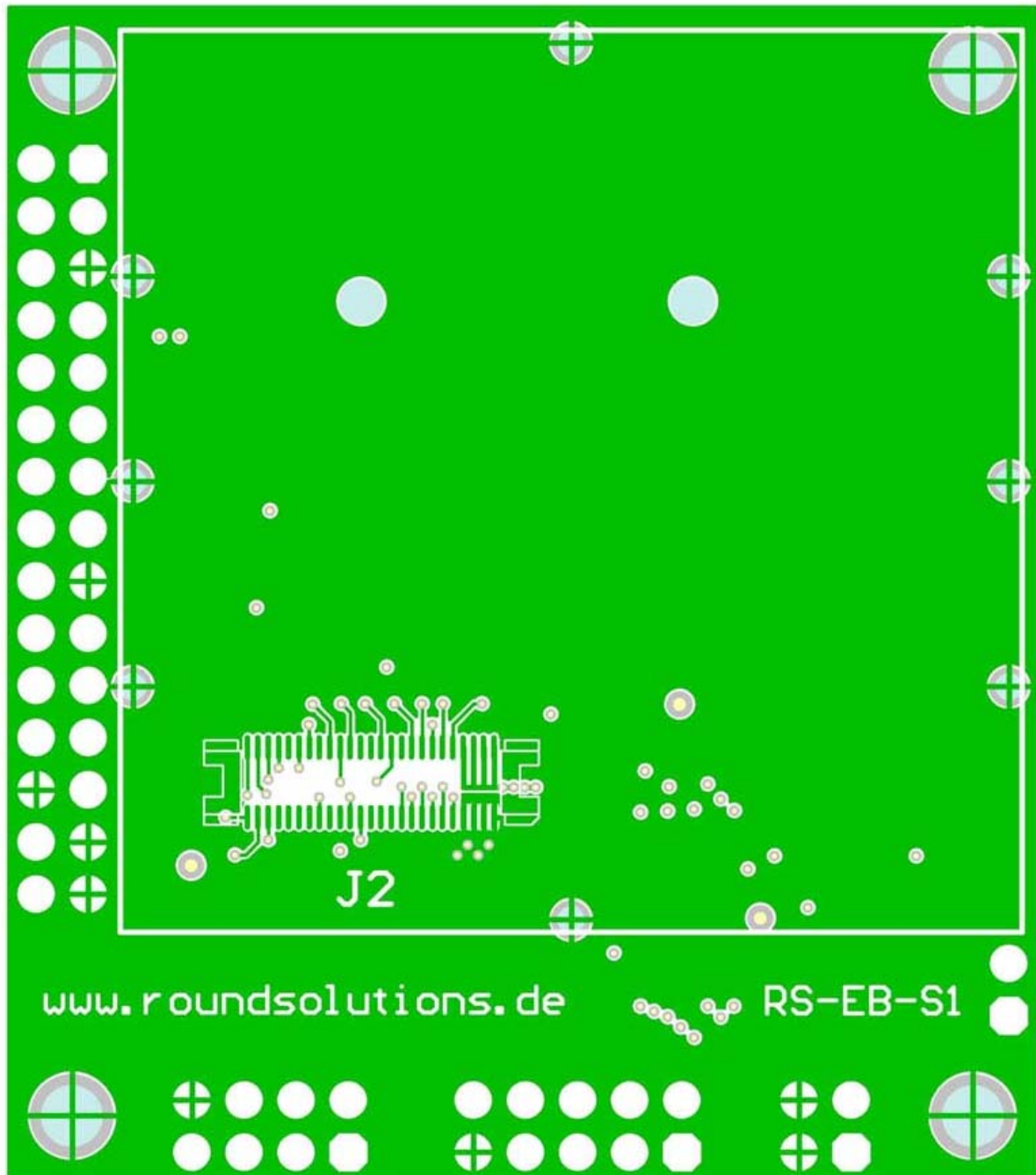
#### JP1 Power Select Jumper

Pin#	Name	Pin#	Name
1	VBATT	2	Power Regulator Out

Connect JP1 to use the on-board power supply.  
**Disconnect** JP1 if an external power supply in use !

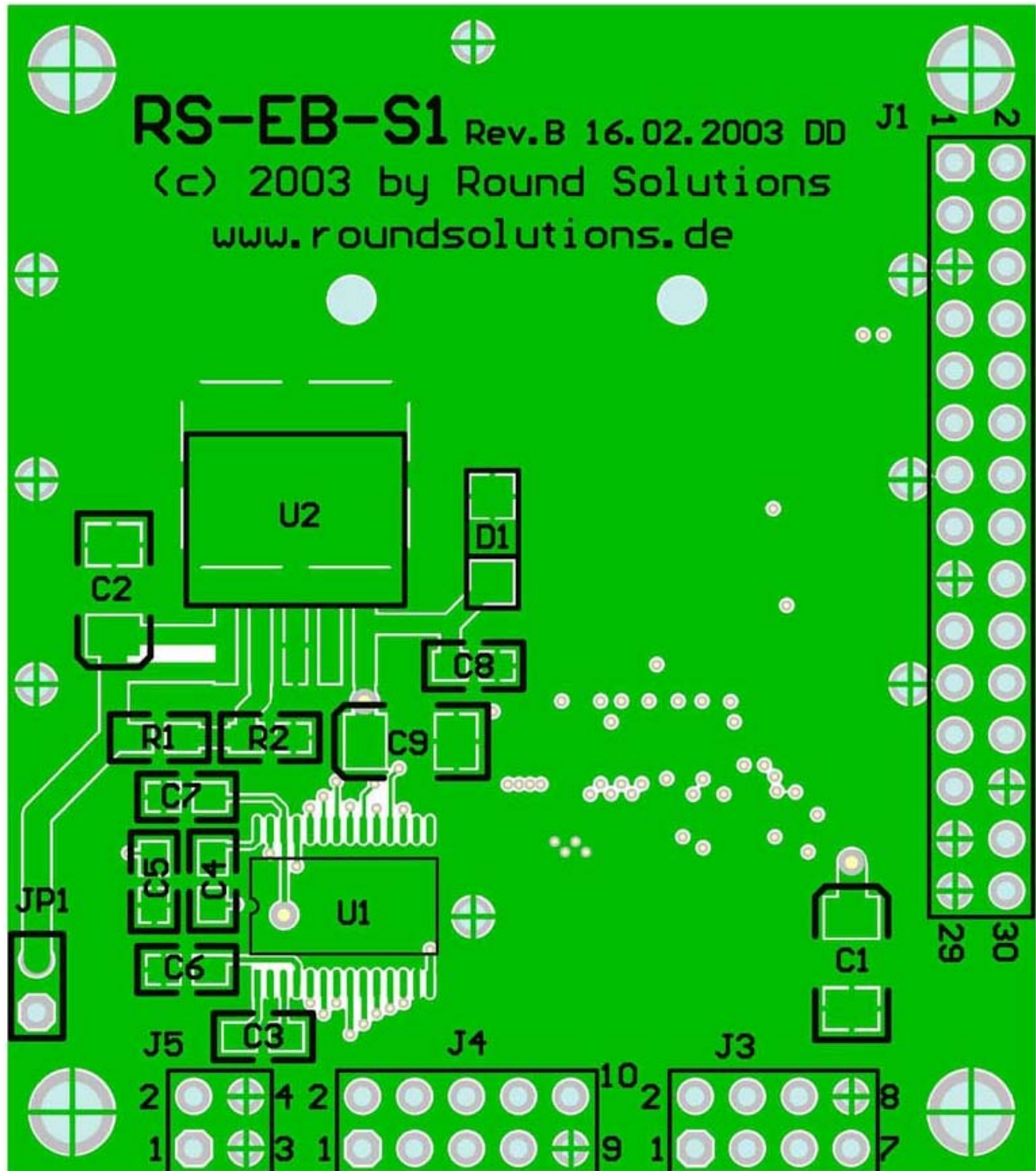
# RS-EB-S1 Technical Datasheet

## Assembly Top Layer



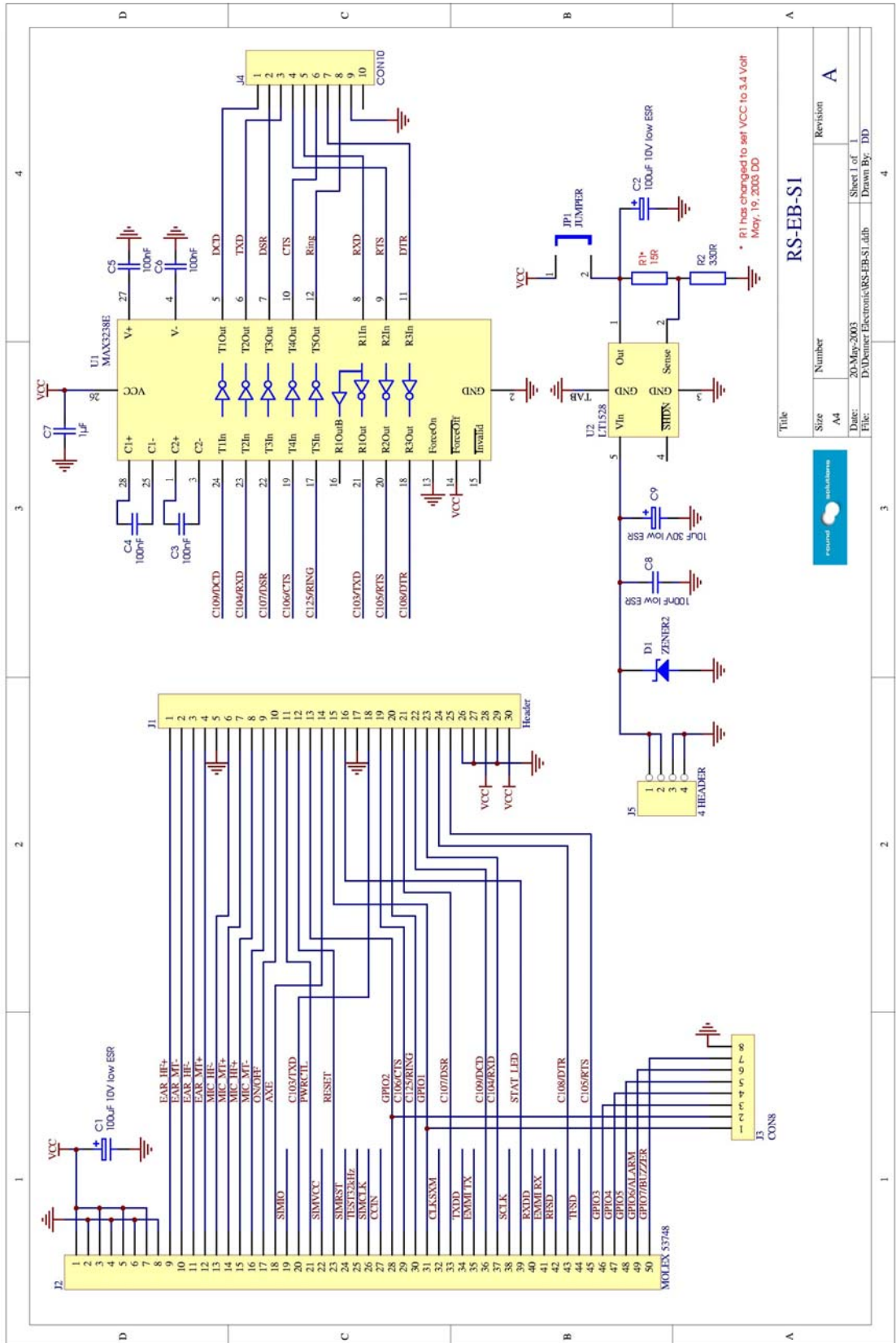
# RS-EB-S1 Technical Datasheet

## Assembly Bottom Layer



# RS-EB-S1 Technical Datasheet

## Schematic



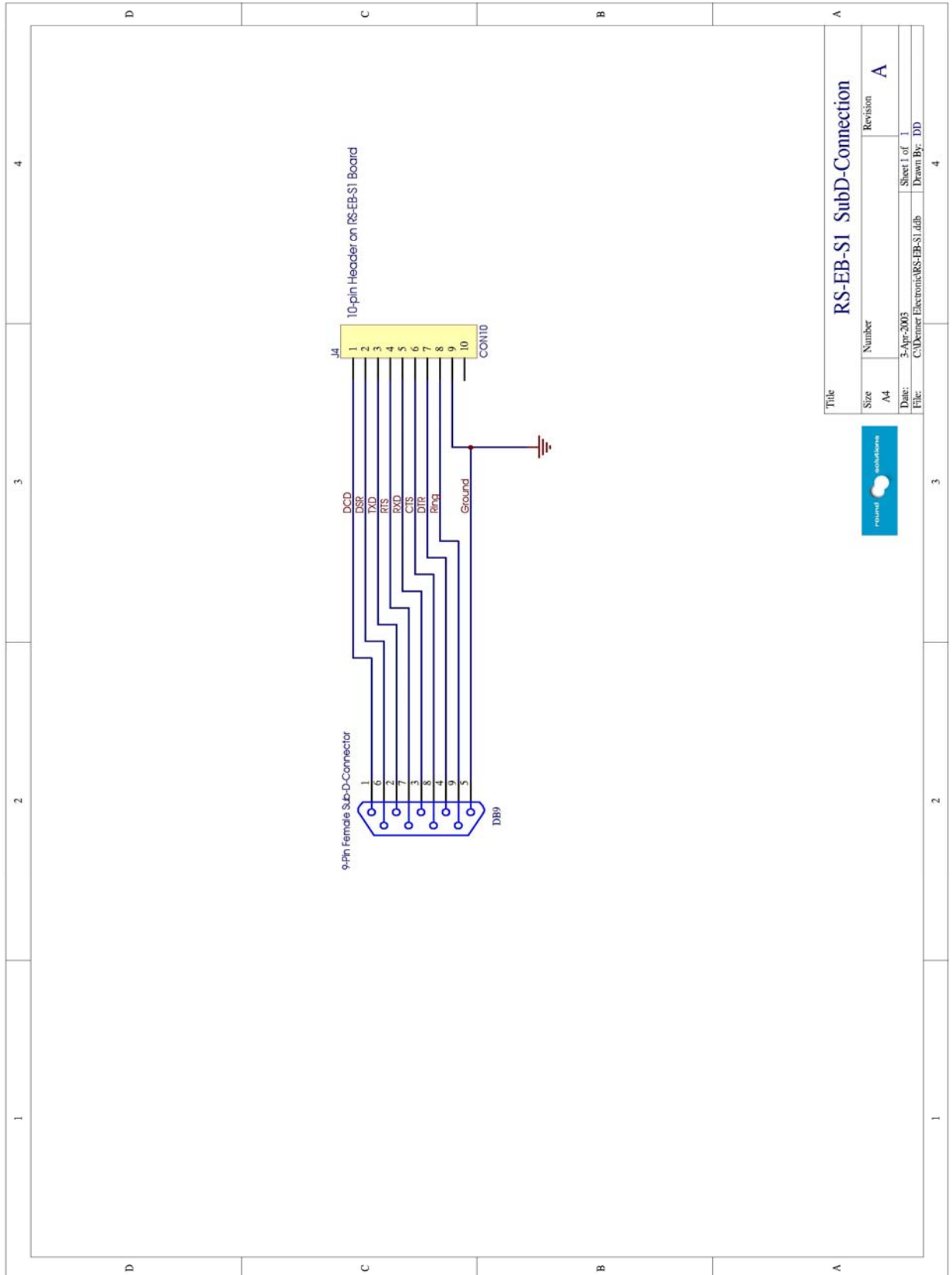
Title		Revision	
Size	Number	Revision	
A4		A	
Date:	20-May-2003	Sheet 1 of 1	
File:	D:\Denner\Electronic\RS-EB-S1.lib	Drawn By:	DD



Title		Revision	
Size	Number	Revision	
A4		A	
Date:	20-May-2003	Sheet 1 of 1	
File:	D:\Denner\Electronic\RS-EB-S1.lib	Drawn By:	DD

# RS-EB-S1 Technical Datasheet

## SubD Connection Schematic



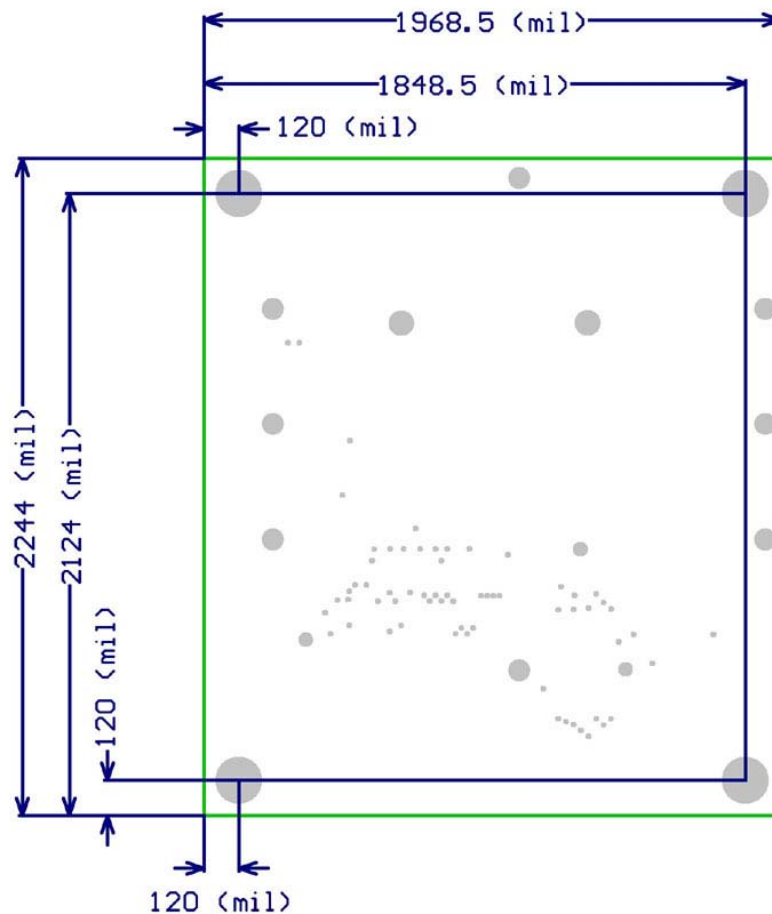
Title		RS-EB-S1 SubD-Connection	
Size	Number	Revision	
A4		A	
Date:	3-Apr-2003	Sheet 1 of	1
File:	C:\Danner Electronic\RS-EB-S1.dib	Drawn By:	DD



# RS-EB-S1 Technical Datasheet

## Dimensions

### RS-EB-S1 Dimensions



calculate mil to mm:

$$\text{mil} \times 0.0254 = \text{mm}$$