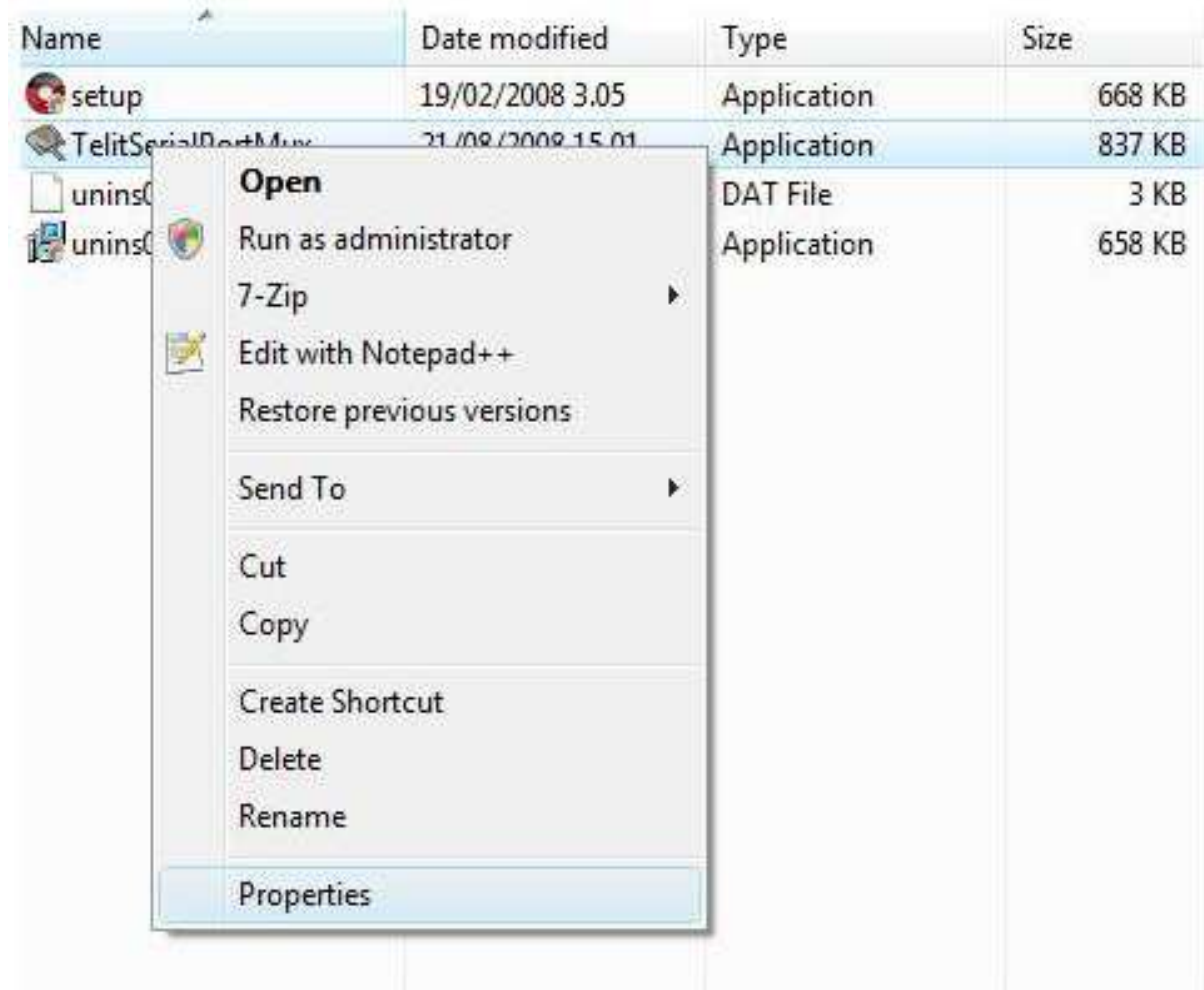


## Install Telit CMUX and Telit Pythonwin on Windows VISTA

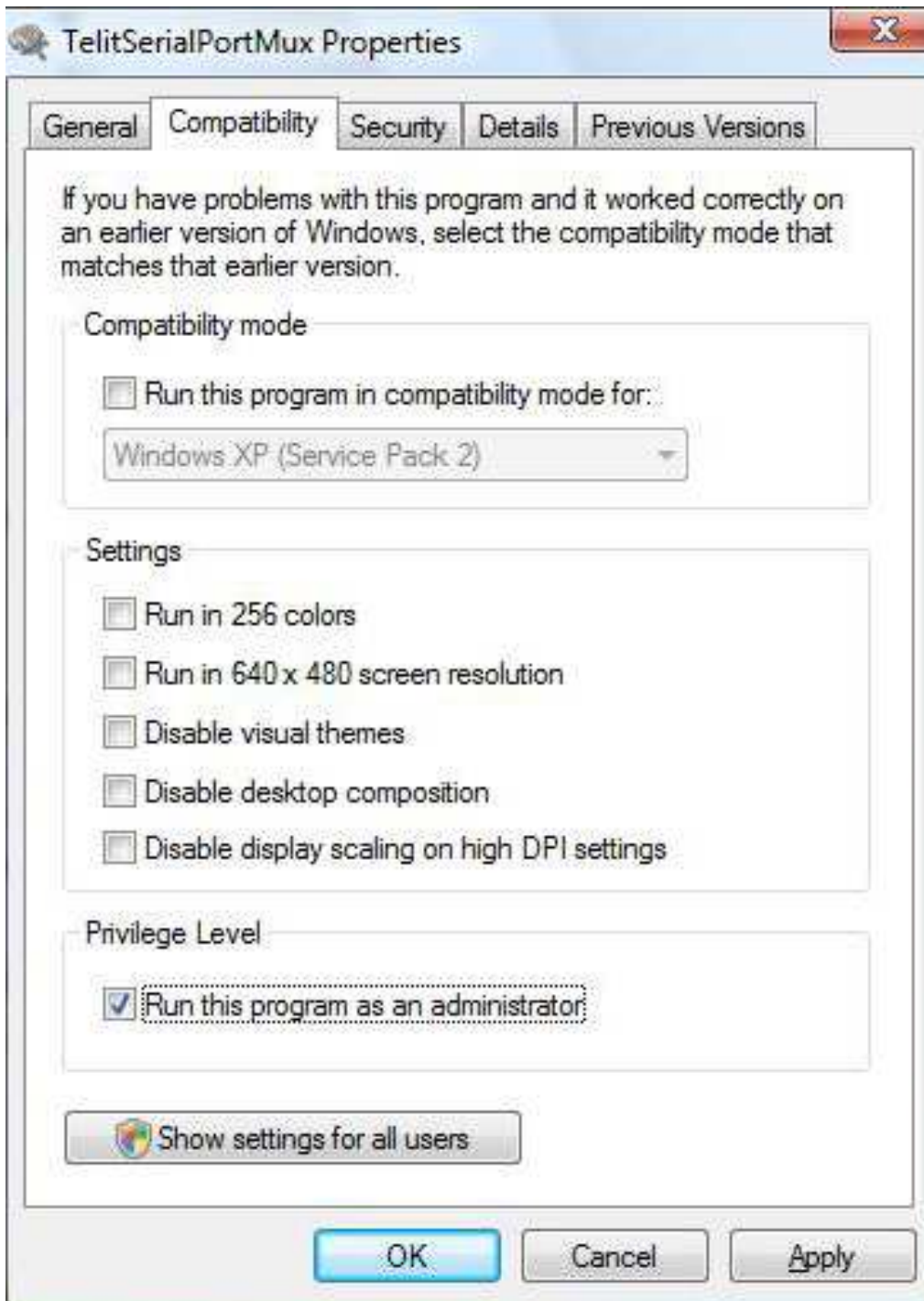
1) You have to disable the DEP ( Data Execution Prevention) in this way:

You have to go in start/programs/accessories/ with key right on "Command Prompt" and click on "run as administrator" and we have to write this string "bcdedit /set {current} nx AlwaysOff" then we have to restart the pc;

Now we can install Telit CMUX (or PythonWin) when the installation is completed we have to do start the file executable of CMUX (or PythonWin) as administrator key right on TelitSerialPortMux.exe (or PythonWin) "click on properties"



Click on compatibility and you select "Run this program as an administrator"



Now CMUX (or pyhonWin) works!!!

If you want able the DEP you have to use the same procedure and you have to send this string: `bcdedit /set {current} nx AlwaysOn`