



## Disclaimer

The information contained in this document is the proprietary information of Telit Communications S.p.A. and its affiliates ("TELIT").

The contents are confidential and any disclosure to persons other than the officers, employees, agents or subcontractors of the owner or licensee of this document, without the prior written consent of Telit, is strictly prohibited.

Telit makes every effort to ensure the quality of the information it makes available. Notwithstanding the foregoing, Telit does not make any warranty as to the information contained herein, and does not accept any liability for any injury, loss or damage of any kind incurred by use of or reliance upon the information.

Telit disclaims any and all responsibility for the application of the devices characterized in this document, and notes that the application of the device must comply with the safety standards of the applicable country, and where applicable, with the relevant wiring rules.

Telit reserves the right to make modifications, additions and deletions to this document due to typographical errors, inaccurate information, or improvements to programs and/or equipment at any time and without notice.

Such changes will, nevertheless be incorporated into new editions of this document.


Copyright: Transmittal, reproduction, dissemination and/or editing of this document as well as utilization of its contents and communication thereof to others without express authorization are prohibited. Offenders will be held liable for payment of damages. All rights are reserved.

Copyright © Telit Communications SpA 2009.



**GE863-PRO3 how to upgrade non-OS to Linux**  
 Rev.0 -21/01/09

**Applicable Products**

GSM   GPRS					
<b>GE863-PRO<sup>3</sup></b> Embedded					
<table border="0"> <tr> <td data-bbox="547 748 751 779">GE863-PRO3</td> <td data-bbox="751 748 1125 779">GE863PR3***-***</td> </tr> <tr> <td colspan="2" data-bbox="547 831 1125 936">           The suffix “***-***” depends on the module HW/SW configuration. Please contact your Telit representative for details         </td> </tr> </table>		GE863-PRO3	GE863PR3***-***	The suffix “***-***” depends on the module HW/SW configuration. Please contact your Telit representative for details	
GE863-PRO3	GE863PR3***-***				
The suffix “***-***” depends on the module HW/SW configuration. Please contact your Telit representative for details					



# 1. Introduction

## 1.1. Scope

This user guide serves the following purpose:

- Provides details about the GE863-PRO<sup>3</sup> software versions: non-OS and Linux OS
- Gives detailed instruction on how to upgrade a non-OS module to Linux OS.

## 1.2. Audience

This User Guide is intended for software developers who develop applications on the ARM processor of GE863-PRO<sup>3</sup> module in Linux environment.

## 1.3. Contact Information, Support

Our aim is to make this guide as helpful as possible. Keep us informed of your comments and suggestions for improvements.

For general contact, technical support, report documentation errors and to order manuals, contact Telit's Technical Support Center at:

[TS-EMEA@telit.com](mailto:TS-EMEA@telit.com) or <http://www.telit.com/en/products/technical-support-center/contact.php>

Telit appreciates feedback from the users of our information.

## 1.4. Open Source Licenses

Linux system is made up of many Open Source device drivers licensed as follows:

GNU GENERAL PUBLIC LICENSE

Version 2, June 1991

Copyright (C) 1989, 1991 Free Software Foundation, Inc.

675 Mass Ave, Cambridge, MA 02139, USA



## GE863-PRO3 how to upgrade non-OS to Linux

Rev.0 -21/01/09

Everyone is permitted to copy and distribute verbatim copies of this license document, but changing it is not allowed.

Please refer to the following web page for the full text of the license:

<http://www.gnu.org/licenses/gpl-2.0.html>

### 1.5. Product Overview

The GE863-PRO<sup>3</sup> module contains a fully featured GSM/GPRS communications section, compatible with the other Telit GSM/GPRS modules, but also incorporates a standalone ARM9 CPU and memories, dedicated to user applications.

This eliminates the need for an external host CPU in many applications, bringing true real-time and multi tasking capabilities to an embedded module.

### 1.6. Related documents

The following documents are related to this user guide:

- [1] TelitGE863PRO3 Hardware User Guide 1v0300773a
- [2] TelitGE863PRO3 U-BOOT Software User Guide 1v0300777
- [3] TelitGE863PRO3 EVK User Guide 1V0300776
- [4] TelitGE863PRO3 Linux Development Environment 1V0300780
- [5] TelitGE863PRO3 Product Description 80285ST10036a

All documentation can be downloaded from Telit's official web site [www.telit.com](http://www.telit.com) if not otherwise indicated.

### 1.7. Document History

Revision	Date	Changes
ISSUE #0	21/01/09	First Release

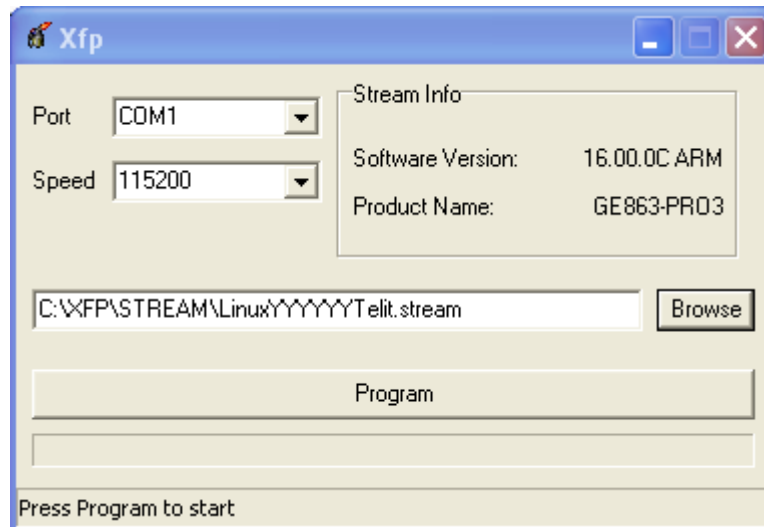




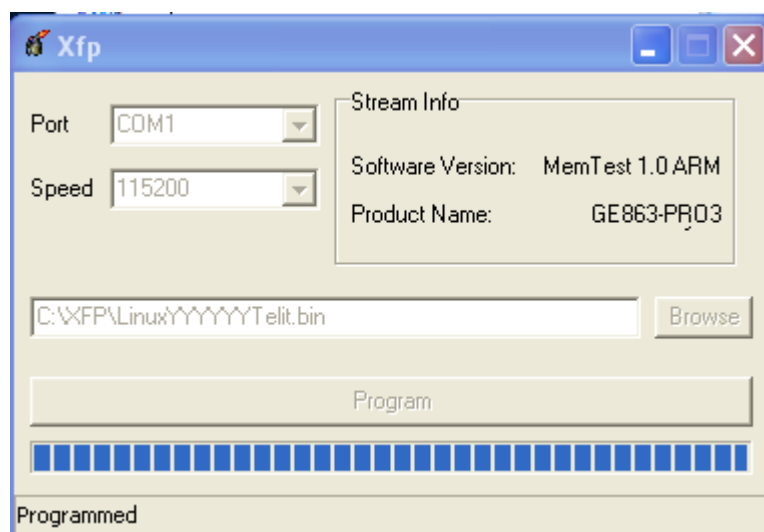


## GE863-PRO3 how to upgrade non-OS to Linux

Rev.0 -21/01/09



- **STEP 6:** Power Off the module, Press **Program** and after that power it on.



Click **Ok**

- **STEP 7:** Close the program xfp.exe
- **STEP 8:** The **GE863-PRO<sup>3</sup>** operation system has now been programmed.



